

# Paper Plane Challenge



Royal Flying  
Doctor Service  
WESTERN AUSTRALIA

# Welcome aboard!

Making sure people have access to health care and life-saving emergency treatment across the regions of WA is what we do at the Royal Flying Doctor Service (Western Operations).

We believe that everyone, no matter where they live, work or travel deserves to have skilled and caring doctors and nurses to help them look after their health, and to treat them during emergencies while flying to specialist care.

We have a team of medical clinicians and pilots who are committed to providing the finest care to the furthest corner of WA. Together we provide fast, free and efficient emergency retrievals, GP health clinics, dentistry, telehealth and medical chests.

Every year on 17 May, we celebrate Flying Doctor Day to commemorate the anniversary of the first aeromedical flight in Australia.

**Help us celebrate Flying Doctor Day by hosting a RFDS Paper Plane Challenge in May!**

## In the last year



9,465  
patients retrieved



8,560,000  
kilometres flown



16,375  
landings

# Paper Plane Challenge

Take flight with your Paper Plane Challenge on 17 May, or anytime in May and fundraise to help fly us further.

## Fundraising ideas



Take flight with the Paper Plane Challenge



Hold a morning tea for the whole office



Dress up themed day in the office



Sausage sizzle or pizza lunch in the office



Collect Containers for Change and donate the funds to RFDS WO ID number C10336670



Set a challenge to reach a kilometre goal e.g. move 26km for the 26 patients every day who need aeromedical care

You will help raise essential funds and make a real difference to the Western Australians that depend on the RFDS. Please feel welcome to contact our Fundraising Team for more information.

**Email:**  
fundraise@rfdswa.com.au

**Phone:**  
08 9417 6400

# Prepare for take off



## 1 Cleared for take off

Contact our fundraising team about your flight plan, and they will send an Authority to Fundraise and you're cleared for take off!



## 2 Share your flight plan

Time to plan your challenge. Set a date and time for your workplace and start fundraising! Encourage participants to practice their folding and plane designs.



## 3 Take off

Set up the tarmac and decorate your challenge area. Mark your starting line and print your flight log to help record each flight. Complete your final flight checks and you're ready for take off! Don't forget to follow the challenge rules and record flight distances on your flight log.



## 4 After the challenge

Send through your photos and present the winning pilot with their RFDS Paper Plane Certificate. Use the hashtags #rfdswa #flyusfurther #RFDSpaperplanechallenge to share your challenge on social media.



## 5 Send in your proceeds

Please ensure to donate the funds raised under your workplace name on or before 17 May via our Flying Doctor Day website: [www.flyingdoctorday.com.au](http://www.flyingdoctorday.com.au)



## 6 Celebrate

Celebrate your hard work and participation in the Paper Plane Challenge!

# The Challenge

As the RFDS brings the finest care to the furthest corners of Western Australia, we challenge you to fly your plane the furthest!



## Create your aircraft

Each pilot must create their aircraft with one A4 piece of paper by folding only. No cutting, gluing, stapling or other adjustments allowed. Each pilot can create as many planes as they want and enter multiple times.



## Measure your tarmac

Mark a starting line on your tarmac and measure a straight line with cones or tape.



## Take Off

Each pilot must pay their landing fees (donation) and approach the starting line to launch their aircraft.



## Measure the distance flown

Record the distance flown on the Paper Plane Challenge Flight Log.



## Announce the winners

Award certificates to the winners. You can create your own categories, but we suggest the following:

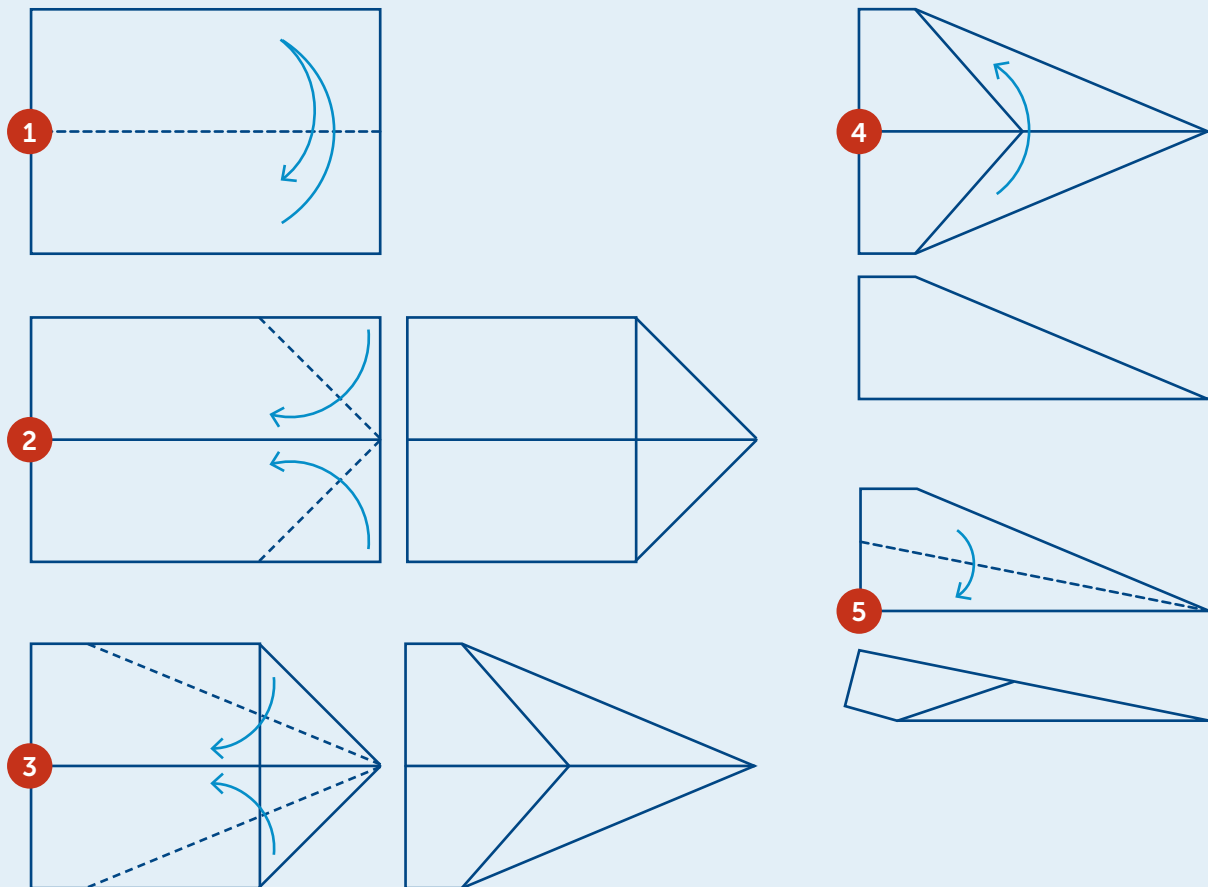
- Challenge winner
- Pilot who flew their plane the furthest
- Highest individual fundraiser
- Best aircraft design



# Paper Plane Folding Instructions

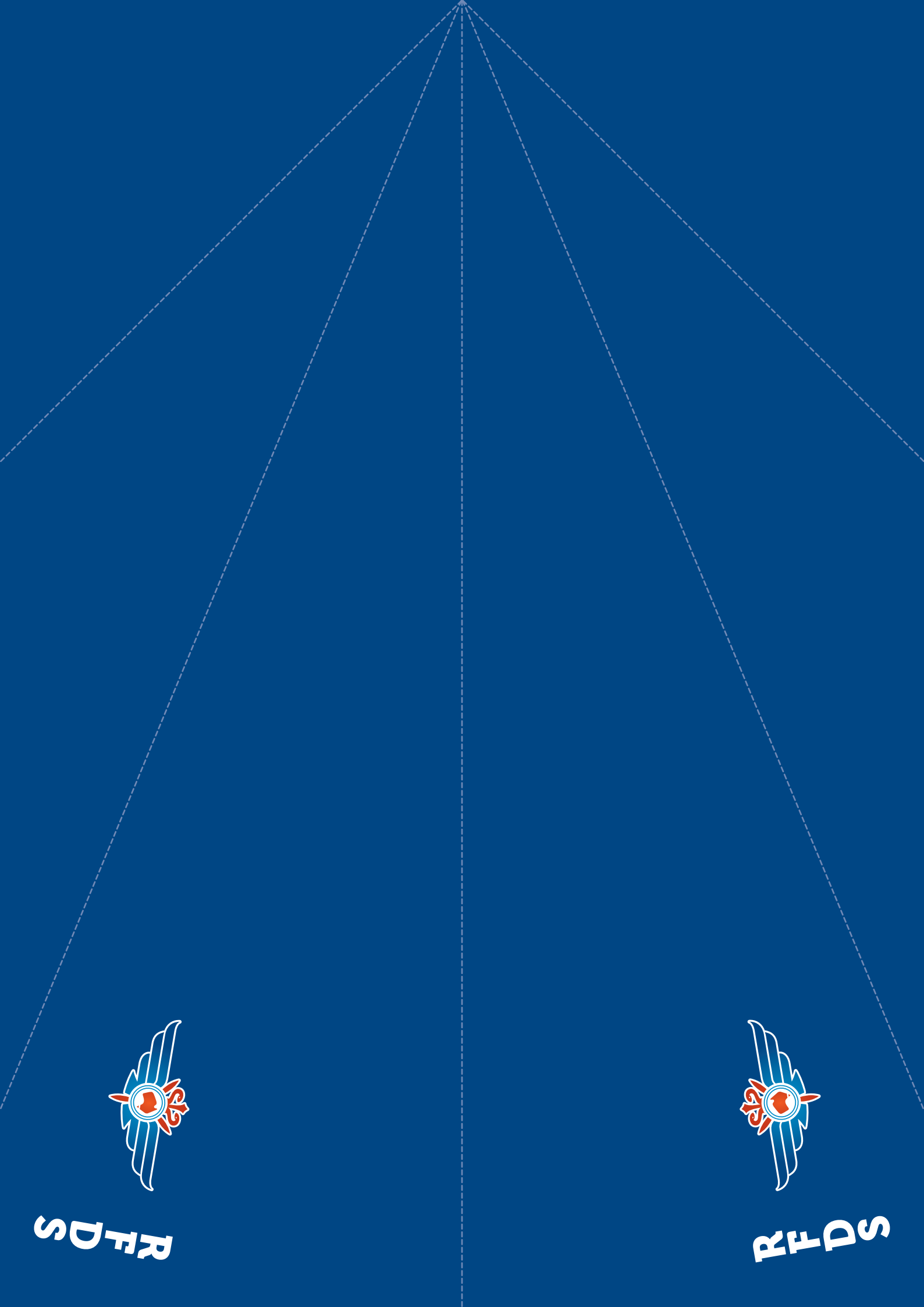
## Equipment List

- One piece of A4 paper per person
- Ruler to help with folding (optional)
- Measuring tape to measure distance flown



We encourage all paper plane engineers to decorate their planes by colouring and drawing on provided template. Send pictures of your best creations to [fundraise@rfdswa.com.au](mailto:fundraise@rfdswa.com.au) to be featured across RFDS WA social media channels.





**RFD'S**



**RFD'S**



Royal Flying Doctor Service

**RFDS**




Royal Flying Doctor Service

**RFDS**



# Thank you for helping to fly us further



 08 9417 6400

 [fundraise@rfdswa.com.au](mailto:fundraise@rfdswa.com.au)

 [www.rfdswa.com.au](http://www.rfdswa.com.au)

 @RFDSWA

 @rfdswa